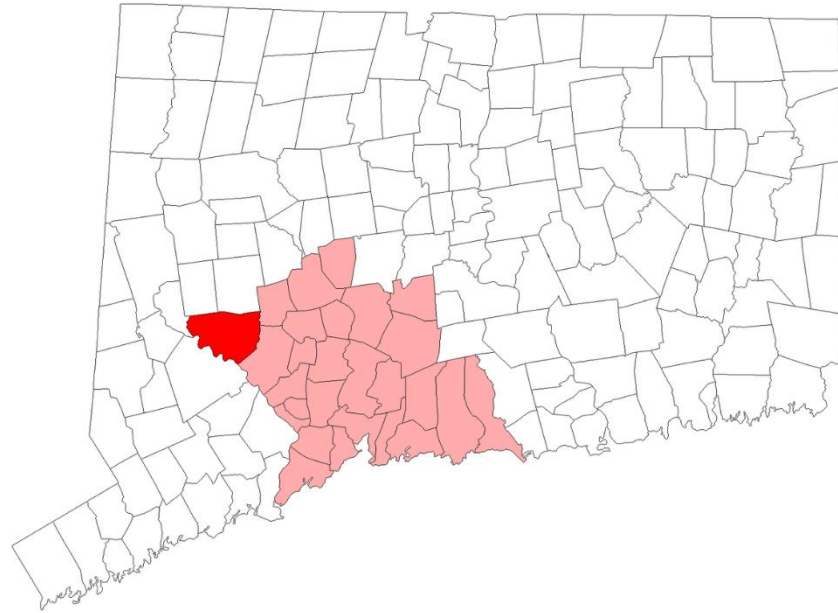


SOUTHBURY CONNECTICUT



August 18th, 2024 Flooding Event

SOUTHBURY

Southbury is a Town in western New Haven County, Connecticut, USA. It was incorporated in 1787, and the present day Town of Southbury has 40.1 square miles of land, 126 miles of municipal roadways and almost 20,000 residents. The Zip Code for the whole town is 06488. Southbury is a unique and exciting town. Residents enjoy the rural character and our wonderful Main Street.

August 18,2024

The town of Southbury experienced a historic rain event that has been referred to a 1,000 year storm. It is reported that areas of Southbury received over 15” of rain at a rate of 3” an hour.

This unpredicted and unprecedented rainfall event caused flash flooding throughout our community and a second flooding event from what is believed to be a release of a large amount of water from a geographical failure.

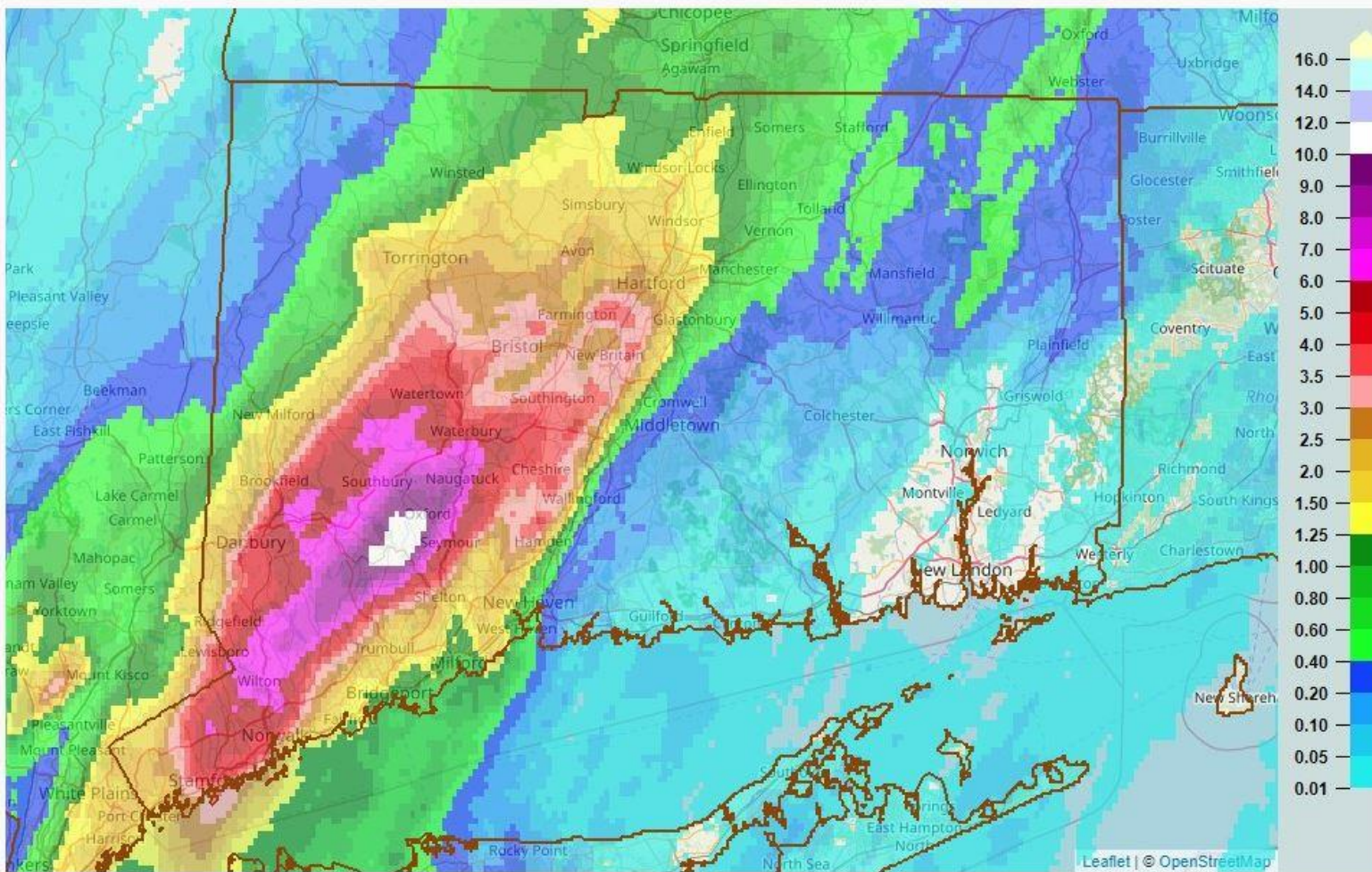
**Town of Southbury declared a Local
State of Emergency @ 16:15 on
Sunday August 18, 2024**

**The Southbury Board of Selectman
extended the Local State of Emergency for
30 days on Friday August 23, 2024**

August 18th & 19th Response

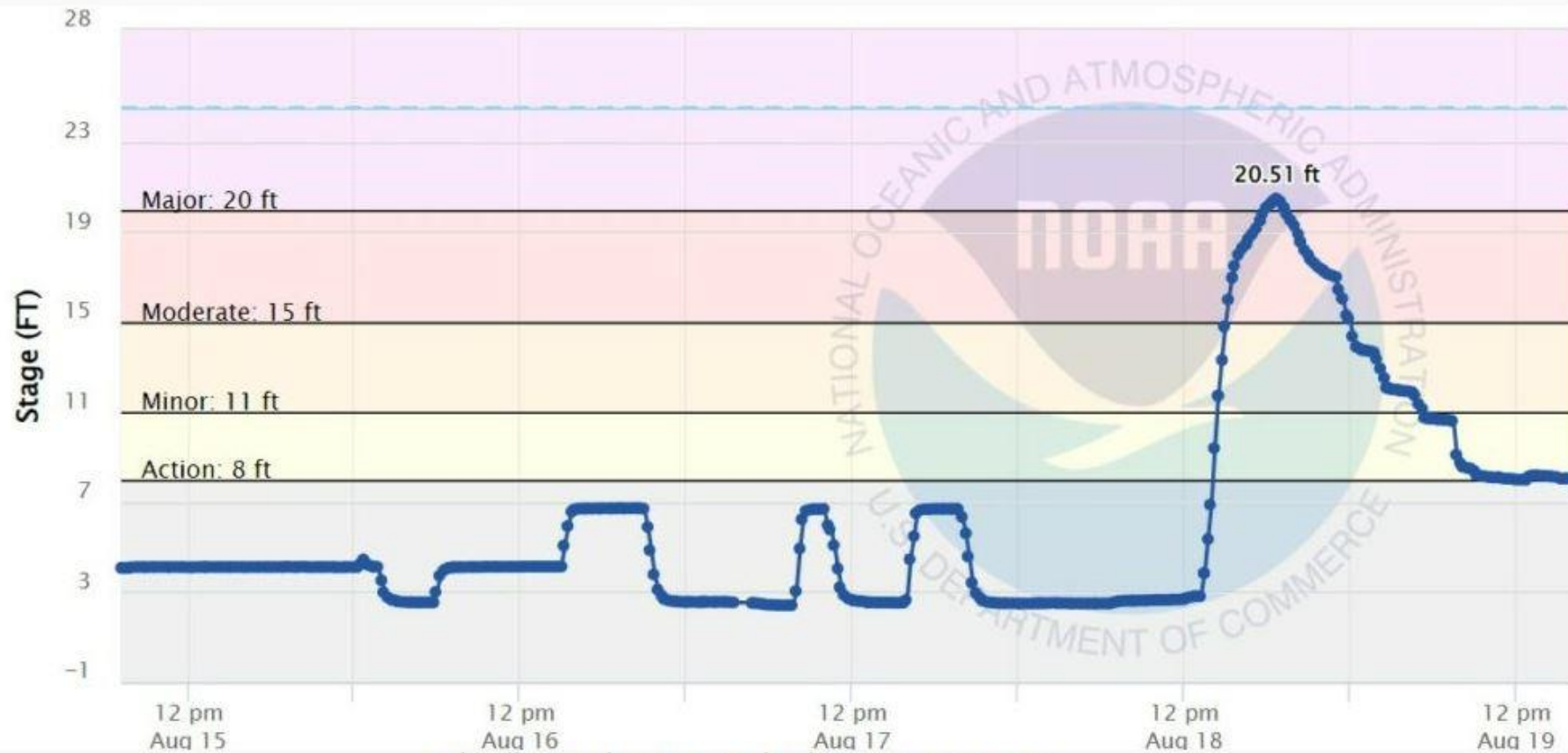
- The Volunteer Fire Department and Mutual Aid Agencies from across the state responded to approximately 40 calls (24 water rescues) in a short period of time while coordinating a rescue operation to rescue stranded campers by boat.
- The Police Department responded to over 250 calls
- Public Works crews were called in and responded to numerous locations throughout town

12 Hour Rainfall Totals



12-hr Rainfall Totals.

Housatonic River @ Stevenson Dam



Flooding on the Housatonic River at Stevenson CT.

Damage Assessment

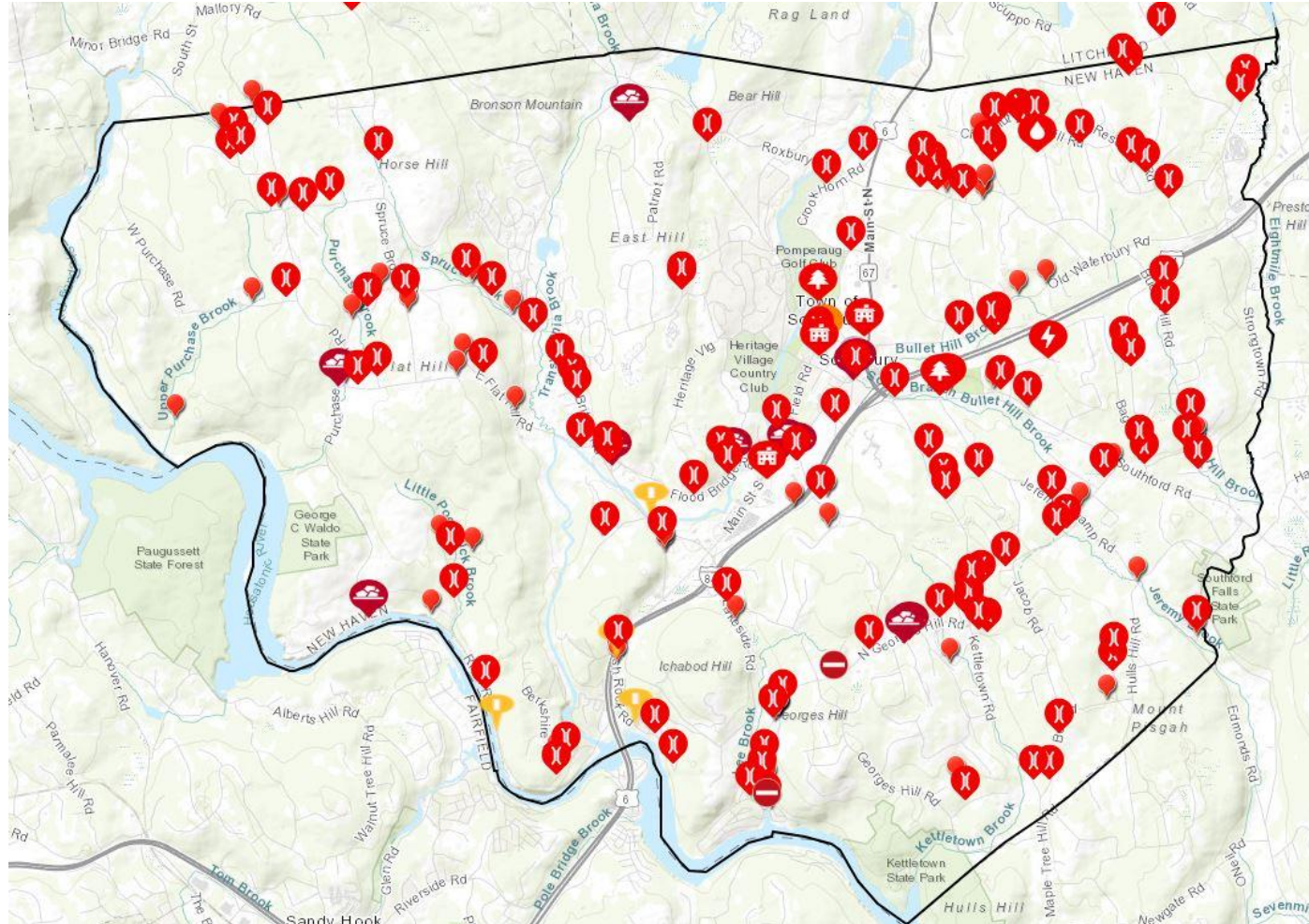
The Office of Emergency Management utilized crisis track to conduct damage assessment. Volunteer Firefighters covered approximately 126 miles of road way documenting damage and debris.

Residents were provided a link to self report residential damage.

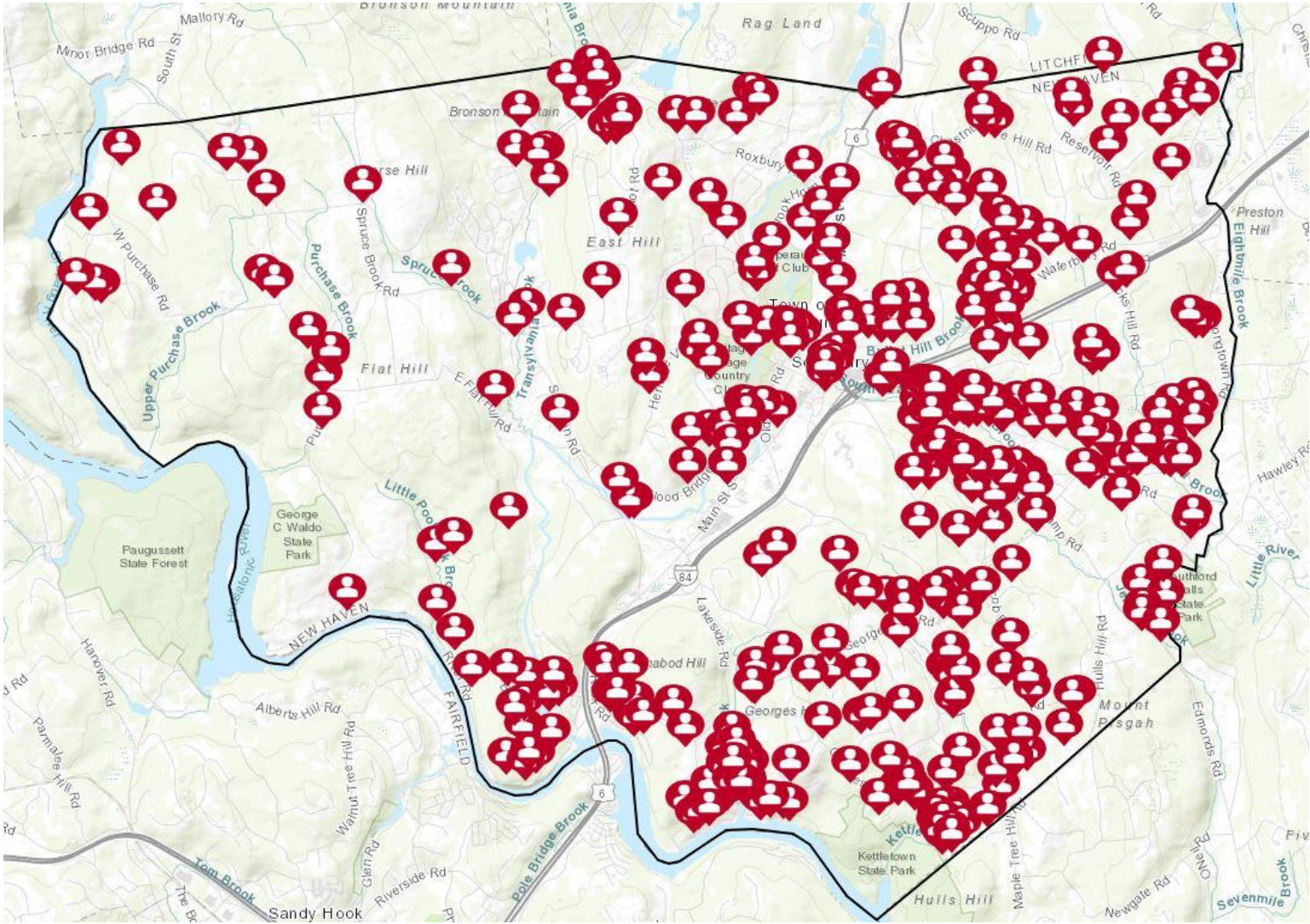
The damage assessment is still ongoing.

Daily updates were communicated to Town residents during the initial 2 weeks following the event

Infrastructure Damage Map



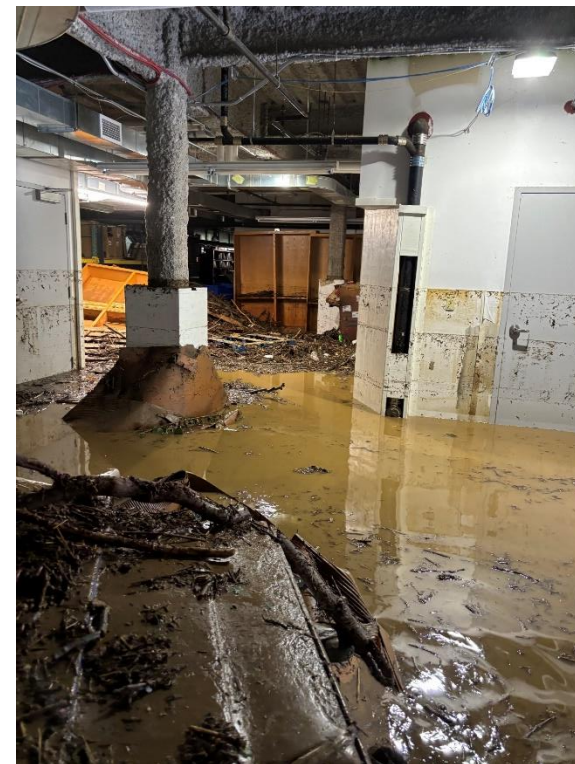
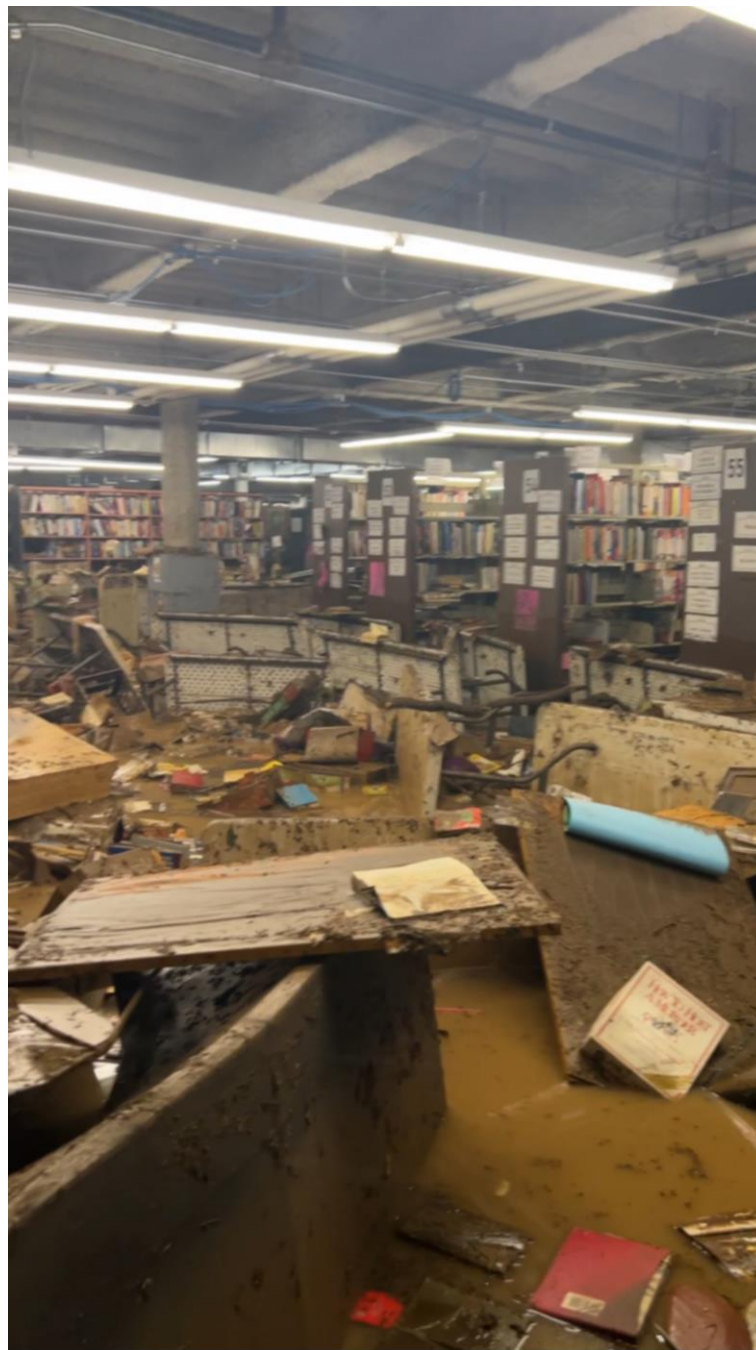
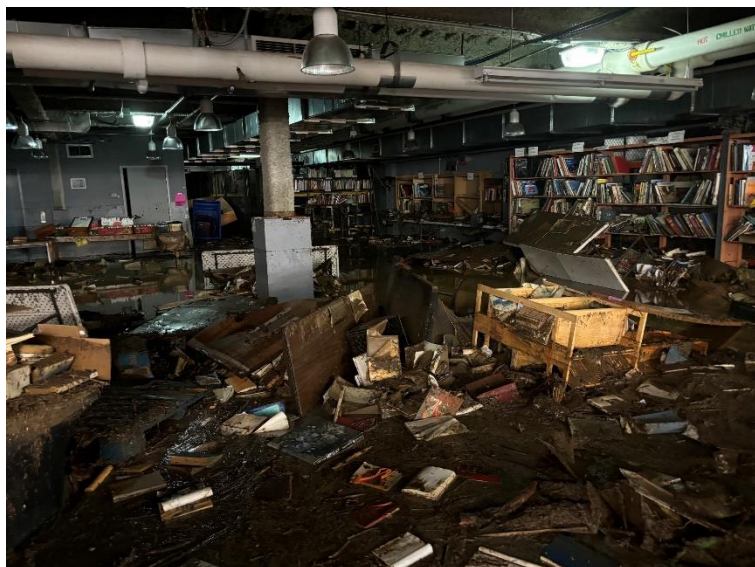
Resident Self Reporting Map

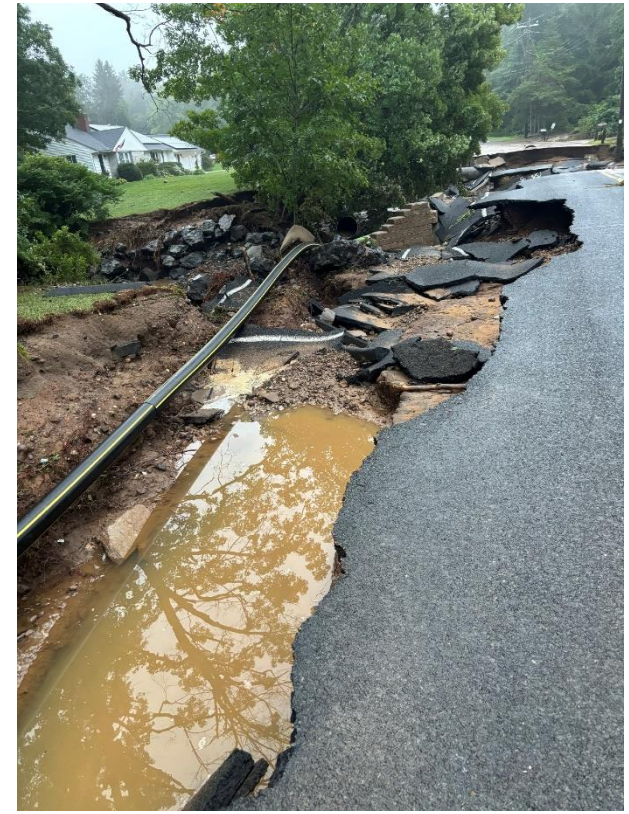




Main Street South & Main Street North(RT67/6)

Southbury Library





Old Field Road





Old Waterbury Road / CT Water

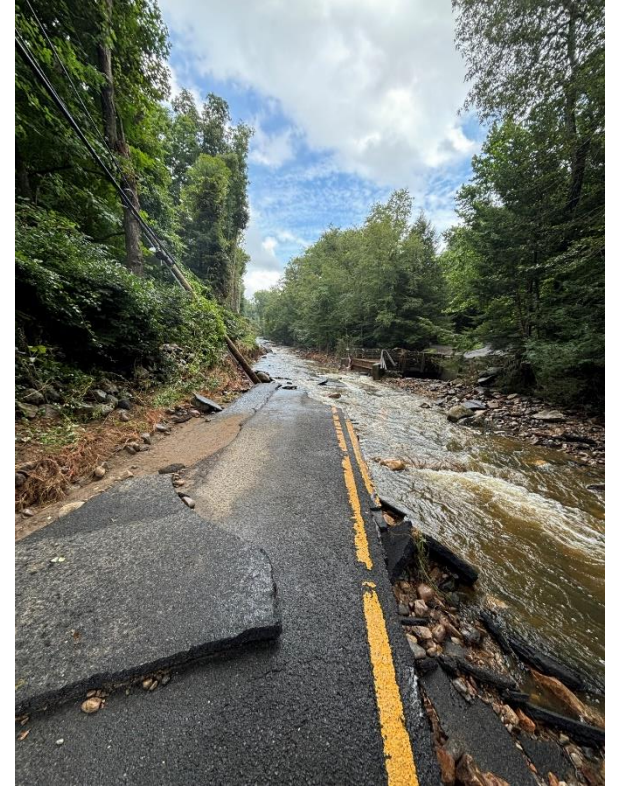
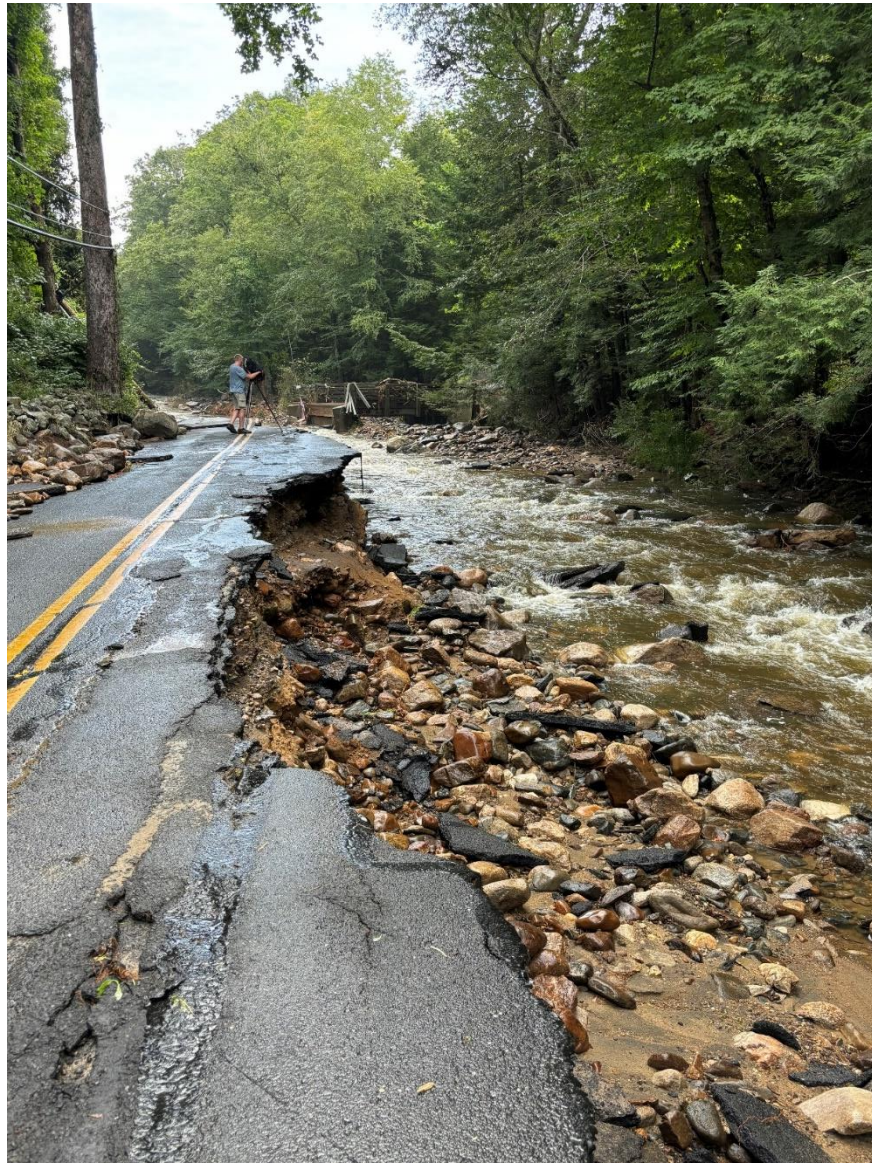


Larkin State Bridal Trail



Community House Tennis Courts & State Route 67 intersection





Georges Hill Road

Public Safety Agencies

In addition to normally scheduled hours our Police department staffed officers and dispatchers for additional hours to ensure response and provide assistance to the residents of Southbury.

The volunteer fire department, in addition to the storm responses conducted damage assessments throughout the town. These activities enabled town officials and the public works crews to get to work immediately on life safety issues.

Public works crews have been working round the clock to ensure roadway safety and applying “temporary” fixes to town roadways.

Resident Self Reporting

It is extremely important for all residents and property owners to report damage from this event through the Crisis Track portal.

There is a direct link to the reporting site located on the Town of Southbury webpage.

<https://crisistrack.juware.com/public/CTDEMHS/request.html>

To date, we have received over 600 self reports. This data has been shared with state and federal partners.

Region 15

With the weather event occurring just 7 days prior to the first day of school, the school district administration was in direct communication with Town officials. The conversations were very productive and they have been and continue to be valued partners in the recovery efforts.

Bus transportation, drop off and pickup plans were drafted, revised and revised again, with guidance from our Police Department, as our Public Works crews worked to open roadways.

All Region 15 Schools opened on time, August 27, 2024

State DEMHS & FEMA

FEMA Individual Assistance (IA) teams and State of CT DEMHS personnel were in Southbury on August 29th and 30th conducting residential assessments.

FEMA Public Assistance (PA) teams and State of CT DEMHS personnel are scheduled to be in town the week of September 9th to conduct public damage assessments of municipal roadways, bridges, culverts and facilities.

Disaster Relief and Recovery

Southern Baptist Disaster Relief

Southbury Women's Club

Southbury Needy Fund

Southbury Food Bank

American Red Cross (Disaster Relief and Shelter operations)

Town Personnel

In addition to our Public Safety agencies and Public Works Department, the following town departments have been instrumental in the response and recovery efforts:

First Selectman's Office

Southbury Fire Marshal

Finance Office

Building Department

Southbury Library Staff

Senior Center Staff

Social Services

Information Technology Office

Town Assessors Office

Town Clerk's Office

Parks and Recreation Office